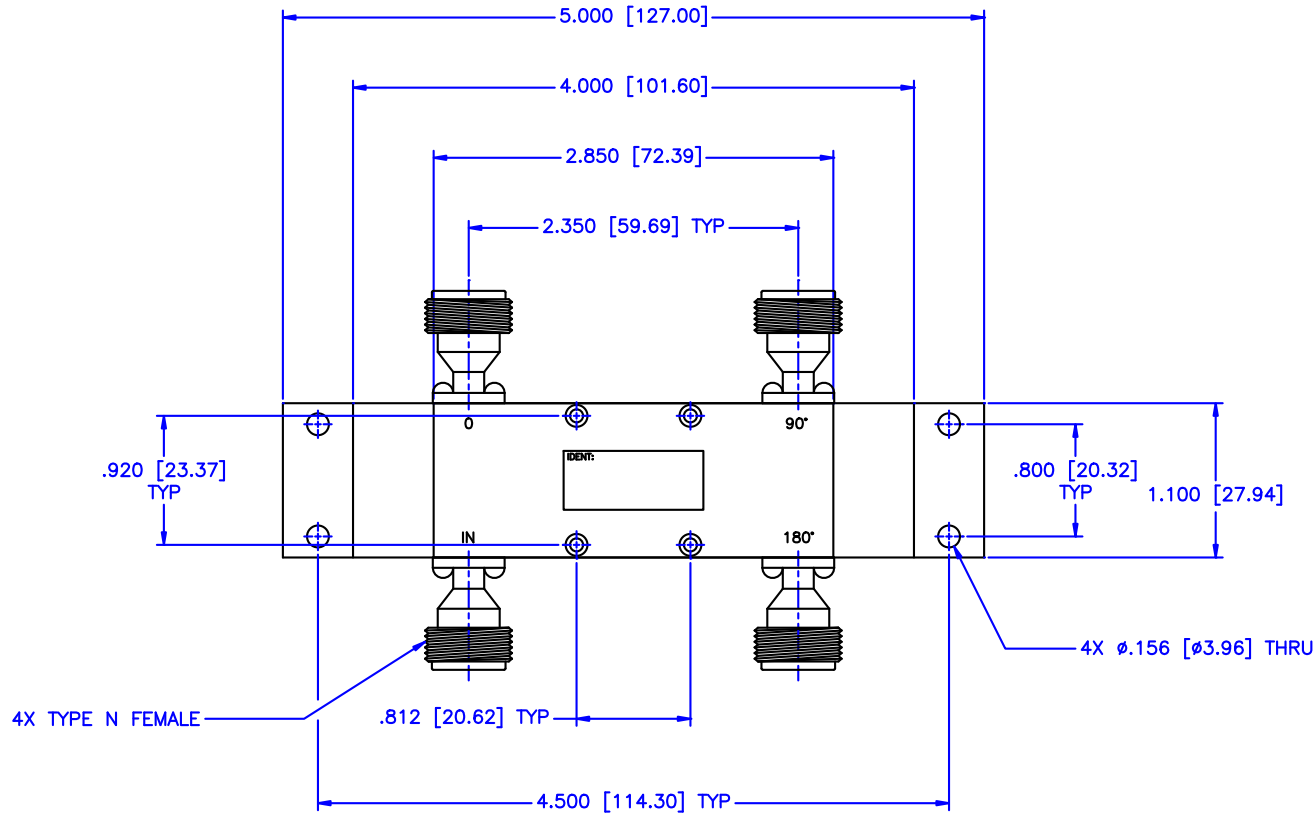


REVISIONS				
ZONE	REV	DESCRIPTION	DATE	APPROVED

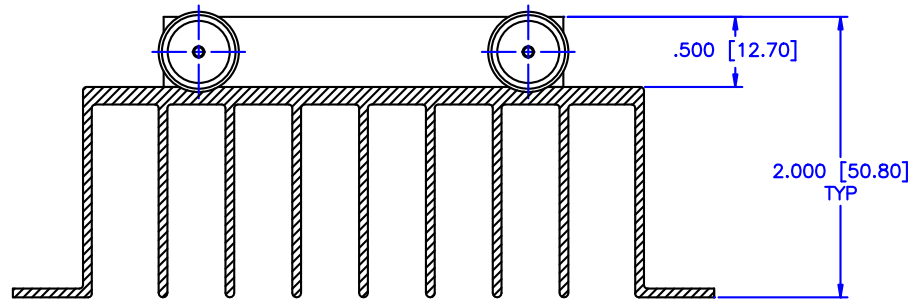


4X TYPE N FEMALE

4X Ø.156 [Ø3.96] THRU

SPECIFICATIONS:

- Frequency Range: 1–18 GHz
- Isolation: 17dB Min.
- VSWR: 1.35:1 Max.
- Coupling: 3dB
- Insertion Loss: 2dB Max.
- Power Handling: 300W CW
- Amplitude Balance: 1.5dB Max.
- Phase Balance: 10° Max.



MATERIAL:		MICROWAVE COMMUNICATIONS LABORATORIES INC. 7255 30TH AVE. N. SAINT PETERSBURG, FL 33710 TEL: (727) 344-6254 FAX: (727) 381-8118 http://www.mcli.com		SCALE: N/A
UNLESS OTHERWISE SPECIFIED: TOLERANCES IN (INCHES) OR (mm) (MILLIMETERS) FRACTIONS: ± 1/64 DECIMALS: ± 0.01 ± 0.005 ANGLE: ± 1/2°		DRAWING TITLE: 90° HYBRID		
DRAWING: Paboon Luekhamhan		PART NO.: HB-88-300/NF		
DATE: 04-20-2010	APPROVED: T. Nguyen	DATE: 04-20-2010	CHECK CODE: OD2L5 SIZE: N/A REV: N/A DRAW NO.: 84760 DO NOT SCALE THE DRAWING	